



Hosta Happenings

May 2011

Vol. 15, Iss 4

MISSISSIPPI VALLEY HOSTA SOCIETY

HOSTA SALE

SUNDAY, MAY 22, 2011

9 AM - MEMBER'S ONLY SALE

10 AM-1:30 PM - PUBLIC SALE

**DUCK CREEK PARK SHELTER #2
DAVENPORT, IOWA**

**HOSTAS, HOSTAS, HOSTAS
AND COMPANION PLANTS**

Please drop off your plants at the sale location at 8 AM and have them named, if possible. We will price them! If you are unable to get them there on Sunday morning, please call Carolyn Hamilton at 355-6973 or Sally Stewart, 359-4752, to make other arrangements.

A SAMPLING OF HOSTAS THAT WILL BE FOR SALE
AT THE MAY 22 PLANT SALE!!!

Blue Ivory, Captain's Advent, Justine, Goodness Gracious, Little Treasure, Magic Fire, Pistache, Happy Dayz, Rhino Hide, Ripple Effect, Touch of Class, Volcano Island, Snow Mouse, Hands Up, Empress Wu

Blue Angel, Blue Sensation, Butter Cream, Chain Lightning, Daddy Boomer, Enterprise, First Frost, Great Arrival, Great Escape, June, Lakeside Hazy Morn, Lakeside Old Smokey, Lakeside Tee Ki, Lollapalooza, Mystic Star, On the Border, Patriot, Scarlet Ribbons, Stained Glass, Striptease, Teatime, Wave Runner, montana Aureomarginata, Tricyrtis Golden Glory, Helleboros Banana Cream Pie

Komodo Dragon, Lemon Lime, Blue Cadet, Golden Oriole, Golden Anniversary, Sagae, Sum & Substance -- and many, many others!!!

~~~~~

Help support our local chapter members --

Liz Jansen is having a hosta sale on May 19, 20 and 21.

Mike Carstensen is a vendor down at the Davenport  
Farmer's Market on Saturday mornings.

Don Musak is also a vendor at the Davenport Farmer's Market  
on Saturdays and also at the Illinois Farmer's Markets.

## FOLLOW-UP ON NEW DEER REPELLENT

Several issues ago, we had an article about a new deer repellent. Following is some more info:

Product information:

- ~~Just approved systemic animal repellent
- ~~Used on flowers and ornamentals; lasts up to one year once active
- ~~Active ingredient is Capsaicin (hot pepper)
- ~~Easy to apply single application
- ~~Rainproof!

Repellex USA is proud to announce their new systemic animal repellent to the market. This exclusive breakthrough technology allows capsaicin (hot pepper) to be absorbed into the plant by simply planting a tablet next to a growing plants root system. Once the repellent is absorbed over 7-30 days, the repellent will stay active for up to one whole year. Since the repellent is internally treating the plant, it will not wash off in the rain, like traditional repellents do over time.

This repellent is labeled and approved for repelling: deer, rabbits, moles, voles, gophers, groundhogs, dogs, cats and feral hogs. During the initial uptake time it is recommended to apply Repellex Original Deer and Rabbit Repellent to treat unprotected foliage while the systemic repellent is absorbed and reaching an effect repellency level.

Note: This repellent is not intended on food or fee crops. Avoid contact of pesticide with roots, foliage, stems

and fruits of all crops intended for consumption because unpleasant taste will result.

One 50-count bottle of Repellex Systemic Tablets will treat approximately 25-40 plants 12" tall. The number of tablets needed to treat a plant varies by height and width. Apply 1 tabled for every foot of plant height and width (height + width). Application amounts may vary by plant type and growth rate. In season, reapplications may be necessary with very fast growing plants.

One 50-count bottle costs \$19.99 and according to the Repellex web site is available from Green Thumbers in Davenport.

~~~~~

Thank You from Carolyn:

Thank you to all of the people who helped get our VanderVeer Hosta Glade ready for Spring. 10 people showed up for Fluff and Buff and we got all seven gardens weeded and "fluffed" in two hours!!! It really wasn't bad this year!

Then we did the placing of the name tags on a Saturday morning and we had a lot of help with that also. Many hostas have yet to come up or even be big enough to identify so we didn't complete the entire job and will have to go back a later time. That same day we dug approximately 140 plants for the Hosta Sale that is coming up on May 22. The morning people just stayed on and several other folk joined us for the dig, pot and label. It was a great day -- and so much help!!!!

On the following Monday, six of us went to the Bettendorf Children's Museum and dug some of plants from that small Hosta Glade for the sale and everyone helped pot and label.

Everyone pitched in and a good time was had. It was hard work and I really appreciate the time and commitment of all you good people!!! I'd list names, but I know I'd forget someone - but you know who you....

THANK YOU!!! THANK YOU!!!

Carolyn

The following article was taken from **Hostas of Kentuckiana** April newsletter.

Symptomatology of Hosta Viruses

A. S. Windham¹, M. T. Windham², M. R. Hajimorad², O. Adedire², A. Self³ ¹U.T. Extension, ²U.T. Ag Research, ³TN Dept of Agric

Significance to Industry: Big box stores, independent garden centers and wholesale nurseries were surveyed for the presence of virus infected hosta cultivars in Middle and West Tennessee. Twenty-nine symptomatic hosta cultivars were infected with one or more of the following viruses: hosta virus x, tomato spotted wilt virus and/or tobacco rattle virus.

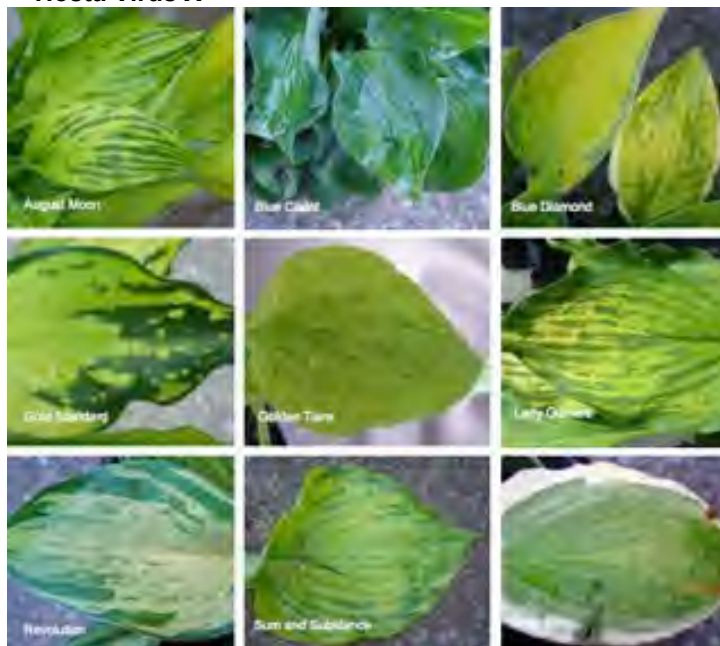
Nature of Work: Hosta is an extremely popular perennial plant used in shade gardens in Tennessee. Unfortunately, it is susceptible to several virus diseases such as hosta virus x (HVX) (2), arabis mosaic virus (ArMV), tomato spotted wilt virus (TSWV) and tobacco rattle virus (TRV). Recently, HVX was confirmed in hosta sold in Tennessee retail and wholesale outlets (1). The purpose of this survey was to determine the viruses present in hosta sold in big box stores, independent garden centers and wholesale nurseries in Middle and West Tennessee. Twenty retail outlets and nurseries were selected for the survey. Plants with symptoms of virus infection such as ringspots, mosaic, abnormal green streaks on gold hosta and oak-leaf pattern were collected for testing. Symptomatic hosta were taken to the Soil, Plant and Pest Center and tested for HVX using Immunostrips for HVX from Agdia Inc. Also leaves from symptomatic plants were shipped to Agdia Inc where they were assayed for HVX, ArMV, TSWV, TRV, impatiens necrotic spot virus and tomato ringspot virus.

Results and Discussion: Virus infected hosta was recovered from 15 of 20 locations. Diseased hostas were collected at all big box stores, from all but one independent garden centers and from one of two wholesale nurseries. Twenty-nine hosta cultivars were determined to be infected with one or more of HVX, TSWV or TRV. HVX was the most common virus detected, followed by tobacco rattle virus and the tomato spotted wilt virus. In most locations, virus infected plants made up 1% of the inventory. However, at one big box store, nearly 50% of *Hosta* 'Golden Tiara' were infected with HVX. Also, at one wholesale nursery, 15 cultivars of hosta were infected with HVX and/or TRV. Symptoms were most easily spotted on gold hosta cultivar such as 'August Moon', 'Gold Standard' and/or 'Sum and Substance' due to abnormal green streaks along leaf veins. Another common symptom was stunting. Hosta infected with HVX appeared to be less vigorous, and were stunted compared to healthy plants of the same cultivar. One of the interesting aspects of this survey was the knowledge level of nursery and store personnel on hosta viruses and symptoms associated with virus infection. None of the personnel recognized common symptoms associated with virus infection. There appears to be a general lack of knowledge of the viruses that infect hosta and the symptoms associated with virus laden hosta. To increase the awareness of the Green Industry, a web page was created on the Bugwood Network (3).

Literature Cited:

1. Adedire, O. L., R. H. Wen, A. S. Windham, M. T. Windham and M. R. Hajimorad. 2008. Hosta virus X in

Hosta Virus X



Tobacco Rattle Virus



Tomato Spotted Wilt Virus



hosta identified in Tennessee, USA. Plant Pathology. Doi:10.111/j.1365-3059.2008.02011.x

2. Lockhart, B. E. L. 1996. Characterization of a potyvirus infecting *Hosta* spp. Plant Disease. 80:1040- 1043.

3. Windham, A. S. 2008. Symptoms of hosta virus infection. The Bugwood Network. <http://www.ipmimages.org/browse/autimages.cfm?aut=11521>

Thanks to Mary Schindler and her friend in the Nashville Hosta Society for permission to use this article.

MISSISSIPPI VALLEY HOSTA SOCIETY & GUEST!

BUS TRIP: MADISON FARMERS MARKET AND FLOWER FACTORY—STOUGHTON WI!



\$47.00

- BUS LOADS—HOBBY LOBBY, BETTENDORF IA - 6:30 AM
- TO: MADISON WISCONSIN FARMERS MARKET
- LUNCH INCLUDED—BUFFET
- FLOWER FACTORY - STOUGHTON WISCONSIN
- DRINKS & SNACKS PROVIDED—TO AND FROM
- GAMES—PRIZES
- OPTIONAL MUSEUM VISITS
- BRING A CAMERA!



SATURDAY, JUNE 11, 2011—BUS LOADS 6:30 AM! - RETURNS 6:00 PM

Madison Market professes to be the largest producer market in the country, known to have 150 vendors - nearby museums if the market isn't your choice. Terrific Chinese/American buffet lunch included!

At the Flower Factory, visit their unique and beautiful gardens, then browse their huge selection of grasses, hostas, pond plants and perennials.

Send fee payable to **MYHS**, c/o Jim Cato, 12915-25th St Ct., Milan IL 61264



----- Bus to: Madison Market & Flower Factory -----

Name(s) _____

Address: _____ Phone _____

E-mail Address: _____

Special Needs: _____

(No refunds after May 31, 2011)

6 Hosta Trough Companions

By Rebecca Boylan

Growing hostas in containers is a great solution for people who have run out of room in the shade garden, are collecting fickle plants, or want their collection closer to the house. But placing a few mini or small hostas in a pot looks just like that—a few hostas in a pot. You can really make your plants come alive by choosing a few complementary perennial companions, the correct container, and an accessory or two to highlight your hostas.

I choose to grow most of my mini hostas in hypertufa troughs. It didn't start out that way, but as I began collecting more finicky cultivars (such as 'Pandora's Box'), I found that the plants grew much better in a contained, manageable environment. The troughs also protect the plants from voles and my Cairn terriers, and can be pampered more. When I find a mini or small hosta in the ground that isn't faring well, it gets moved to a "rescue" trough until the roots become established.

Trough planting has been discussed in a previous newsletter, but the basics involve covering the bottom of the trough with wire screening for drainage and using a mix of 1 part poultry grit to 2 parts soilless mix. Fill the trough to the top with the mix and place your plants. Plant to the top of the trough, adjusting the root ball and adding more mix as needed. Water well and add more mix if low spots develop.

You could make a lovely eight-inch round trough with three minis, a piece of bark and a few stones. Top dress the container with some moss from the woods and it will look like it's been growing for years. This won't work in a larger trough, as now you're working on a landscape in miniature. Plants are needed for groundcover and to add a contrast to the hostas. Plants chosen also must require the same growing needs as hostas.

A good trough groundcover should be present in the trough for at least three seasons. It may become a bit overzealous, but that's why we have plant auctions. *Veronica repens* 'Sunshine' is chartreuse-colored creeping speedwell with tiny leaves that winds its way nicely around the base of small hostas in a medium to large trough. It hangs over the edge of the trough and can be transplanted with ease.

Ranunculus yakusimanus performs all the duties of a hosta trough groundcover and then some. It creeps throughout the trough with silver-veined, little green leaves and blooms continuously with tiny yellow, buttercup flowers. Just don't plant this ranunculus with any slow-growing hostas as it will overtake the plants quickly. Every two years I need to replant these troughs to keep this plant under control, but it's worth it.

Little companions for little plants are hard to find, but there are some tiny coralbells out there that out-cute our cute little hostas. *Heuchera* 'Petite Pearl Fairy' has

lobed, bronzed leaves dappled with silver. The clump reaches 3-4" high and is topped by numerous wands of light pink flowers in the spring. *Heuchera rubescens* 'Troy Boy' makes an even smaller mound of green leaves topped by pale pink flowers tipped with green. Brightening up the container with a shot of gold and white splashes on small leaves, *Heuchera sanguinea* 'Cherry Splash' tops out at 2-4" and has wands of cherry-red flowers.

Little sedges contrast well with hostas and add airiness to troughs, especially when in bloom. Clumps can be broken apart and planted as rivers or streams within the trough and supplemented with pebbles or a miniature bamboo fence to complete the look. *Carex berggrenii* has 2" long reddish-brown foliage that contrasts well with yellow and chartreuse. *Carex caryophylla* 'Beatlemania' is a 6" weeping green sedge edged in gold, perfect for the edge of a medium to large trough. Sedge-like *Acorus gramineus* 'Minimus Aureus' (dwarf golden sweet flag) is only a few inches high and can also be teased apart and planted in undulating streams. Match this sweet flag with variegated hostas to pick up the yellows and golds.

Sometimes there's one trough companion that can take away all the attention from the hostas, but *Thalictrum kiusianum* (dwarf meadow rue) is worth the show. This little rue forms a 2" mat of feathery leaves and sends out courteous rhizomes throughout the planting. All season long, light pink blossoms pop up to make everyone happy. Plant it as an understory for dwarf hostas in a trough and your plants will shine. It divides easily and can be shared with other troughs and gardening friends.



Height in a form other than hostas is always needed, and epimediums are a wonderful contrast. Many have evergreen foliage, and leaf shape and color also vary; this color may change as the season progresses as color can be dark early in the season, then lighten, and then darken again. Limit your selections to the clumping varieties as the runners will quickly overtake the troughs. Some cultivars which remain under 5" include *E. diphyllum* 'Nanum', *E. grandiflorum* 'Nanum' (pictured), and *E. sempervirens* 'Rose Dwarf'. For taller clumps, consider *E. grandiflorum* var. *higoense* 'Confetti' with speckled and flecked leaflets of dark purple and thin, tapered, white, spider-like flowers, or *E. x 'Domino'* with panicles of creamy white and grape flowers against elongated leaflets speckled in various shades of maroon.

There are many more perennials that can be added to hosta troughs: dwarf astilbes, dwarf goatsbeard (*Aruncus aethusifolius*), dwarf lady's mantle (*Alchemilla alpina*), ferns, and many other dwarf versions of our favorite shade perennials. Don't forget to add the finishing touches: rocks, lichen-covered branches, moss, miniature houses, and other accessories take the trough from planter to scene. Once you get started with one hosta trough, you'll become a fan too. 🌿

THE TRUTH ABOUT GLYPHOSATE

This is an excerpt from an article titled *Using Glyphosate* by Frank Hyman, published in *Horticulture Magazine*, April 2011.

“THE TRUTH ABOUT GLYPHOSATE Glyphosate (best recognized by the trade name Roundup®) is a herbicide with a lower environmental impact quotient (RIQ) toxicity rating (15.3) than organic sprays like insecticidal soap (19), horticultural oil (27.5), pyrethrin (39) and Bordeaux mixture (67.67). (The EPA determines RIQ, a scale of 0 to 100.) Glyphosate works only on growing plants so it is frequently chosen by land-conservation agencies because of concerns about wildlife.

Applied responsibly, glyphosate enters green leaves and stalks, travels to the roots and kills most plants in a week or two by inhibiting amino-acid production. Then, soil microorganisms quickly break down glyphosate into non-threatening phosphorus and amino acids. Correctly applied, glyphosate is not a danger to pets, children, beneficial insects or other wildlife.

According to Jeff Gillman, a professor of horticulture at the University of Minnesota who writes about glyphosate in his useful book *The Truth About Organic Gardening*, some of the most worrisome sounding studies on glyphosate have not been supported by follow-up research. Some news reports, such as the effect of glyphosate on villagers in Columbia and Afghanistan, stem from crop dusters incorrectly and unconscionably dumping the stuff not just on fields of narcotics, but on villages, too. On his shared blog, *gardenprofessors.com*, Gillman says, “I can’t find any reason to think that glyphosate is anything but what it appears to be—an effective weed killer that is on the safer end of the spectrum relative to other chemical weed killers (and here I’m including organic weed killers too. Ever been exposed to those 20-percent acetic-acid vinegar herbicides? I tried one this summer—just being near it made my eyes burn.)”

SAFE USE In the same way that household products like gasoline and alcohol should be used responsibly, there are a few rules for using glyphosate. Don’t get it on anyone. Don’t spray on a windy day—it’ll land on garden plants and kill them. Don’t spray before a rain, as it will just wash off.

Don’t spray near bodies of water because the soap-based “inert ingredients” that come with the glyphosate will kill amphibians. Don’t use brands that promise plants will look dead in 24 hours. They include additional herbicides that might destroy the leaves before the glyphosate is carried to the roots, meaning the weeds will ultimately survive. Don’t fail to read the directions or follow them closely.

I have one good-quality pump sprayer that is used only for glyphosate. I keep a plastic measuring cup with the bottle of concentrate so I can add the right amount; following the instructions, I use a stronger concentration for perennials in the summer than for annual weeds in the winter. After pouring the herbicide in the sprayer, I completely submerge the end of the hose so that the mixture doesn’t foam up and overflow. I adjust the jet so that the spray comes out in drops rather than a mist, so it doesn’t travel as far.

I use the glyphosate once a month during the growing season, which for me can be year-round during a mild winter. On our one-sixth acre lot, it takes about 20 minutes. Applications this frequent actually let me reduce the total amount of glyphosate that I use. Why? Weeds that germinate between applications are quite small and haven’t flowered, much less set seed, by the next spraying. A tiny spritz on one or two leaves will kill such a small plant. I just tap the trigger to see how small a quantity I can spritz on the weed. Also, by killing the weeds before they can re-seed, I’m slowly deducing the weed-seed inventory in my garden.

For full-grown perennial weeds with deep roots, like wisterias and ivies, the first spray hardly shows any results. But with the next month’s spraying, tough, mature perennial weeds wither and die or shrivel up. A third or fourth spraying does the trick for the toughest perennials.” “If you accidentally spritz a garden plant, quickly rinse it off or snap off the affected leaves right away.

The first time you spray weeds with glyphosate may take a while. Subsequent sprays will take less time, because you’ll have less weeds to contend with. You’ll be able to dedicate the time you save on weeding to more enjoying activities like dividing, pruning and planting. Better yet, you’ll have time for just relaxing in the garden with friends on a bench, rather than toiling alone on your knees.”

Wood Mulch Coverage

- One cubic yard will fill roughly 1/2 a pick-up truck bed
- One cubic yard = 27 cubic ft
- One cubic yard will cover 160 square ft at a depth of 2”
- One cubic yard will cover 108 square ft at a depth of 3”
- One 3 cubic ft bag will cover 10 square ft at a depth of 2”
- One 2 cubic ft bag will cover 7 or 8 square feet at 3” deep

Length X Width = Total Square Ft

Length X Width X Depth=Total Cubic Ft

Example: An area 10 x 12 ft = 120 square ft

Multiply that by .25 for a 3” depth of mulch = 30 cubic ft

Divide by 2 = 15 (2 cubic ft) bags About 2 cubic ft is the size most commonly sold now.

For **soil & sand**, use the same calculations as for mulch, but add an extra 25% to allow for settling and packing.

HOSTA CONVENTION IN MADISON, WISCONSIN - JULY 7-9, 2011

by Irwin Johnson

All hosta enthusiasts are invited to the annual Midwest Regional Hosta Society convention July 7, 8, and 9 in Madison, Wisconsin. Many of our members across these midwestern states have never been to a hosta convention. What is a hosta convention?

A hosta convention is many enjoyable and educational activities to give you ideas and examples of ways to improve your garden and learn more about this most popular perennial plant. These activities include:

1. Attendees will tour five private gardens, where you will see hostas new to you, displayed and grouped in ways also new to you, with companion plants, also perhaps new to you.
2. We will have a hosta leaf show; after judging Friday afternoon you will be able to see which were judged the best, again providing you with ideas as to possible additions to your garden. There are more than 100 categories of hostas judged. There will also be artistic displays to admire and a special category of new hosta seedlings and sports.
3. Selling hostas will be vendors from North Carolina, Washington, Georgia, Iowa, Missouri and Wisconsin. You will be able to purchase hostas Thursday, Friday and Saturday (after you have seen the hosta show and the five gardens). Hosta resource books will be available including Mark Zilis' Hostapedia.
4. We will have an auction Friday evening (silent and live bidding!) during which you can acquire even more new hostas.
5. We will offer Judging Clinic #1 Friday morning. This is the first requirement to becoming a hosta judge, and will cost \$10, or you can download the required materials on your computer at home.
6. We will have a Pig Roast Friday evening, overlooking beautiful Lake Monoma and the state capitol building; a banquet Saturday evening, with a cash bar; a buffet breakfast on Saturday morning and a box lunch Saturday midday.
7. Our banquet speaker will be Ed Lyon, Director of Allen Centennial Garden on the Madison campus of the University of Wisconsin. Speaking Friday afternoon, while the hosta show is being judged, will be Mark Dwyer, Director of Horticulture of Rotary Gardens in Janesville, Wisconsin (an AHS Display Garden); and Robert Simiele, who links beautiful pictures of hostas with beautiful music.
8. We will be housed in the Sheraton Madison Hotel, 1-800-325-3535, or 1-608-251-2300, where the special room rate will be \$103 plus tax.
9. In the evenings, after vending Thursday evening, after the auction on Friday evening, and after the banquet Saturday evening, we will have "HOSTATALITY," with water, soda or beer and snacks, on us!!!

Questions? Call Irwin Johnson 1-262-786-2758, or email irwinjohnson@wi.rr.com or send a letter to 13685 Watertown Plant Road, Elm Grove, WI 53122.

Midwest Regional Hosta Convention, Madison, July 7-9

Wednesday, July 6

5-9 p.m., volunteers help vendors bring plants, etc. into vending rooms

Thursday, July 7

8:00 a.m. to 3:00 p.m., vendors bring plants in, volunteers possibly help

4:00 p.m. to 8:00 p.m., registration [upstairs lobby]

4:00 p.m. to 9:00 p.m., receive auction plants [upstairs banquet room]

4:00 p.m. to 9:00 p.m., vending

4:00 p.m. to 9:00 p.m., prepare leaves and artistic displays for hosta show

6:00 p.m. to 9:00 p.m., classification of show entries

6:00 p.m. to 8:00 p.m., place leaves and artistic displays in hosta show room

9:00 p.m. to about 11:00 p.m., hospitality

Friday, July 8

7:00 a.m. to 11:00 a.m., prepare leaves and artistic displays for hosta show

8:00 a.m. to noon, convention registration [upstairs lobby]

8:00 a.m. to noon, receive auction plants [upstairs banquet room]

8:00 a.m. to 5:00 p.m., vending

8:00 a.m. to 11:00 a.m., Judges Clinic #1

8:00 a.m. to 10:45 a.m., classification of show entries

8:00 a.m. to 10:45 a.m., place leaves and artistic displays in hosta show room

11:00 a.m. to noon, judges and clerks lunch

12:00 to 2:30 p.m., judging of hosta show, by judges and clerks

1:15 p.m. to 2:20 p.m., Mark Dwyer, Rotary Gardens, Janesville speaking about hostas

2:30 p.m. to 3:10 p.m., Robert Simiele, pictures of hostas, set to music or

2:30 p.m. to 5:00 p.m. Hosta Show open to the public

4:30 p.m. to 5:00 p.m., experts' critiques of seedlings and sports displayed and judged

5:00 p.m. to 6:30 p.m., welcoming picnic [pig roast]

6:30 p.m. to 9:00 p.m., vending

5:00 p.m. to 6:30 p.m., picnic [pig roast] at park ¼ mile north of hotel; view of capitol

6:45 p.m. to 9:00 p.m., auctions, silent and voice

9:00 p.m. to about 11:00 p.m., hospitality

Saturday, July 9

6:15 a.m. to 7:00 a.m., breakfast buffet

7:00 a.m., load buses

7:15 a.m., buses leave for garden tours

9:00 a.m. to 4:00 p.m., vending by some of our vendors, open to the public

11:30 a.m., box lunches distributed by bus captains,

2:00 p.m., buses return to hotel

2:00 p.m. to 4:00 p.m., hosta show open to the public

2:00 p.m. to 4:00 p.m., last chance for convention attendees to buy from vendors

4:00 p.m. to 4:30 p.m., hosta show teardown, loading of equipment to Rochester, MN

4:00 p.m. to 6:00 p.m., quiet time for convention chairperson and other nap-needs

6:00 p.m., cocktail hour

7:00 p.m., banquet

8:00 p.m. to 8:25 p.m., keynote speaker, Ed Lyon

8:30 p.m. to ???, hospitality

Sunday, July 10

Enjoy optional garden tours

We will see you in Rochester, Minnesota in 2012

Thank you for coming to our convention; drive safely!

"ISTHMUS IN JULY"

2011 Midwest Regional Hosta Convention Registration Form

July 7-9 Sheraton Hotel Madison, Wisconsin

Hosted by the Wisconsin Hosta Society

Register online and pay by credit card at: www.wihostasociety.com

Or send in one registration form with check for each person - Please print

Name [as you want it on your badge] _____
Address _____ City _____ State _____ Zip _____
Home phone _____ Email _____
Publish my name in Convention attendee list? Yes _____ No _____
* Registration confirmation will be sent via e-mail only

Registration fee includes four meals: Friday Pig Roast, Saturday breakfast, Saturday box lunch, and Saturday banquet; convention hosta and handbook, auction, vendors, hosta leaf show, Saturday garden tours, keynote speaker Ed Lyon, speakers Mark Dwyer and Bob Simiele, Judges Clinic I, and Hospitality Room Thursday, Friday, and Saturday

Please select

- \$144.00-Early Full Registration** [by June 9]
 \$164.00-Full Registration [after June 9]

I will donate plants or items for the Friday night auction; Approximate number _____

Meals

Friday Pig Roast
Saturday Breakfast
Saturday Box lunch

Saturday Banquet choice

- Beef Salmon Vegetarian
 I request all vegetarian meals

Judges Clinic, Friday, July 8 from 8 to 11 am

I will attend Judges Clinic 1

A current **Judges Handbook** is required. You can download the free Judges Handbook at www.hosta.org.

Check here if you want to purchase the official handbook and binder at the clinic. Cost is \$10 payable at convention.

Hosta Leaf Show - preparation time Thursday 7 to 10 pm ♦ Friday 7 to 11 am

Check if you plan to: Enter Judge Clerk

Judging will begin Friday, July 8 at 12 noon Check below if you plan to have entries in each:

___ Cutleaf (limit 20 entries) ___ Educational Display ___ Artistic Design
___ Container Grown ___ Non-competitive Exhibit ___ Specialty Division
___ Trough container for Effect ___ Seedling and Sport Award (limit 5 entries)

Speakers

Mark Dwyer – Rotary Gardens Friday 1:15-2:20 pm

Robert Simiele – hostas to music Friday 2:30-3:10 pm

Ed Lyon – Keynote speaker - Director Allen Centennial Garden Saturday 8 pm

Auction

Silent and Voice – Friday evening

Vending – Thursday 4-9 pm, Friday 8 am-5 pm, and Saturday 9 am-4 pm

Tours

Visit 5 beautiful gardens on Saturday 7 am-2 pm

Total Registration amount \$ _____

Send form and check

Ralph Pelkey, Treasurer, WHS
11921 W. State Road 59
Evansville, WI 53536

Checks payable to **WHS**

For questions e-mail

hostameetjuly11@gmail.com

HOTEL: Sheraton Madison Hotel for room reservations at (608) 260-1162 or www.Sheraton.com/Madison.

Mention attendee code [HOSTA]. The group rate of \$103 plus tax is available through June 11, 2011.

706 John Nolen Drive ♦ Madison, WI 53713 ♦ Fax 608/234-1027

AHS DUES: The American Hosta Society offers participation in all national activities, including a convention, 3 issues of "The Hosta Journal", and a directory. They also have a web page - www.hosta.org. Dues are \$30/yr, \$57/2 yrs and \$600 life for an individual. Family memberships are also available at \$34/yr and \$62/2 yrs. Make your check to AHS and send to the Membership Secretary, Sandie Markland, PO Box 7539, Kill Devil Hills, NC 27948

~~~~~

**Midwest Regional Hosta Society Dues** are \$10/yr. Send your check to: Barbara Schroeder, 1819 Coventry Dr., Champaign, IL 61822-5239.

~~~~~

MISSISSIPPI VALLEY HOSTA SOCIETY DUES are \$7/YR. **Please make your check payable to MVHS (not Jim)** and send to JIM CATO, 12915 - 25TH ST. CT., MILAN, IL 61264. We offer 8 newsletters a year, reduced prices on hosta offerings, garden walks, first opportunity to buy plants at our annual hosta and plant sale and many other good opportunities.

Mississippi Valley Hosta Society
909 Mississippi Blvd.
Bettendorf, Iowa 52722

WHAT'S HAPPENING:

May 16 - Silvis Garden Club Bus Trip to Rich's Foxwillow Pines

Jun11 - Bus Trip to Madison/Flower Factory

~~~~~

Visit our MVHS Web Site: **[mvhosta.org](http://mvhosta.org)**

Other hosta and garden web sites:

American Hosta Society - <http://www.hosta.org>

Midwest Hosta Society - [http://www.](http://www.midwesthostasociety.org)

[midwesthostasociety.org](http://www.midwesthostasociety.org)

Hosta Library - <http://www.hostalibrary.org>

Hosta Forum - questions/answers - [http://](http://forums.gardenweb.com/forums/hosta)

[forums.gardenweb.com/forums/hosta](http://forums.gardenweb.com/forums/hosta)

Mini Hosta Forum - [http://](http://groups.yahoo.com/group/minihosta)

[groups.yahoo.com/group/minihosta](http://groups.yahoo.com/group/minihosta)

~~~~~

LET US KNOW!!! IF YOU HAVE MOVED or HAS YOUR EMAIL CHANGED?

Send your corrected info to JIM CATO, 12915-25th ST. CT., MILAN, IL 61264.

Jim's email is: pussbug@aol.com

